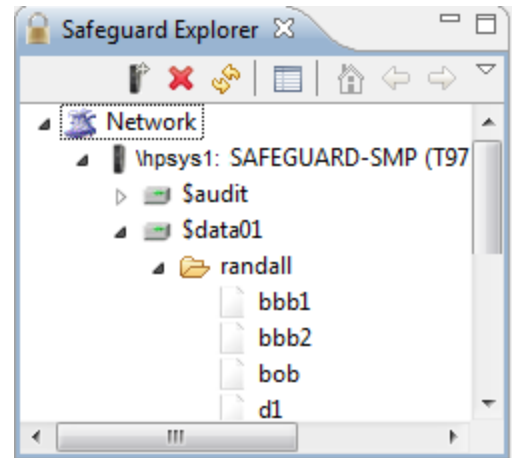




Safeguard Explorer for ECLIPSE

Product Overview

The Safeguard Monitor for ECLIPSE provides an integrated browser for security rules on all types of simple files on NonStop. Automatic ACL evaluation provides quick feedback on inherited Safeguard rules. Users will be able to quickly see where conflicting access rules are located. This plug-in leverages SSH and challenge-response technology to ensure that all monitoring is secure no matter where in the EXPAND network.

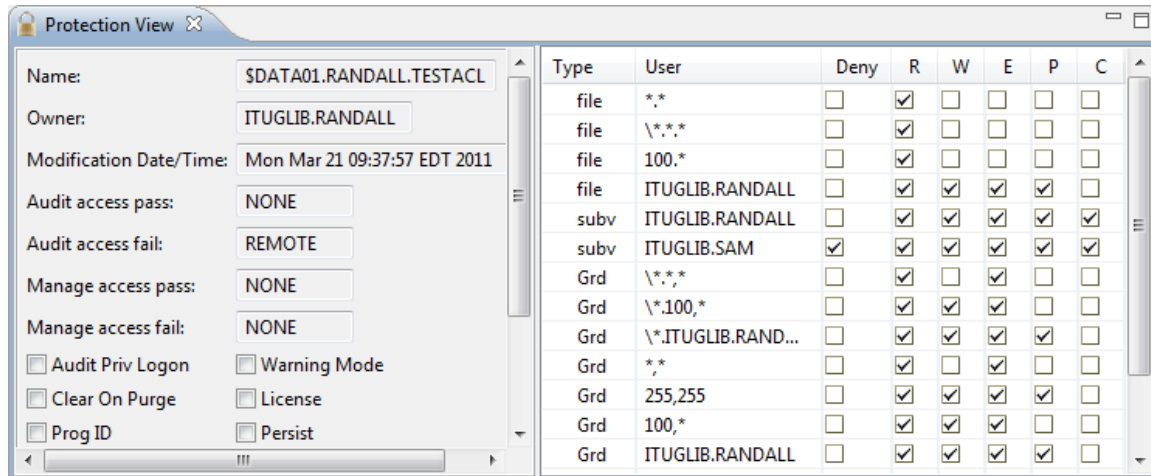


Key Features and Benefits

- Lightweight.
- Inexpensive to own, operate, and deploy.
- EXPAND and IP network browsing.
- SSH communications for all TCP/IP traffic.
- Node definition import/export for easy setup and definition sharing.
- RCP packaging available for stand-alone deployment
- Available server-side licensing

This product has other capabilities as well. Make sure you discuss these with your Nexbridge representative.

Please visit <http://www.nexbridge.com/Products> for more information.



Technical specifications

System Requirements

Hardware	No restrictions
Software	ECLIPSE Indigo 3.7 are recommended for the plug-in component.

Supported HP Platforms

Hardware	HP NonStop Integrity Servers HP NonStop Blade Servers
Software	NonStop Operating System and OSS RVU J06.13 or greater compatibility (or equivalent H06 levels).
Workstations	Windows 2000, XP, Vista, Vista 64. Windows 7, 8 Mac OS Linux Solaris
ECLIPSE IDE	3.7.x + (Indigo), 4.2.x (Juno), 4.3.x+ (Kepler).
RCP Package	ECLIPSE 3.7 (Indigo)

Ordering information

Please contact your Nexbridge sales representative or sales@nexbridge.com to find out more about the Safeguard for ECLIPSE product. Corporate licenses and volume discounts are available. Annual license fees per seat apply. All information is subject to change.